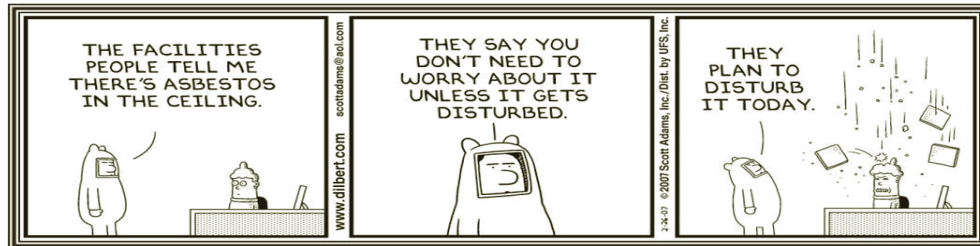


Protection for your staff, your buildings, your peace of mind.

The Problem:

Asbestos-containing material in school floors can be a facility management nightmare. The hazards associated with asbestos exposure (including lung cancer and asbestosis) put facility occupants at risk and expose schools to extensive liability issues. But abating the material can be prohibitively expensive.



The Solution:

Your solution has arrived: The Asbestos Barrier System (ABS). ABS can both eliminate facility occupants exposure to asbestos hazards AND help you avoid expensive abatement projects. The system is proven, practical, and – best of all – affordable. ABS has over twenty years of proven encapsulation success. It has been used in schools, commercial and industrial settings across the United States.

Before



After



The Process:

The Asbestos Barrier System is a patented, high burst strength, laminated membrane material. It is laid directly over asbestos-containing material to provide an airtight encapsulation of hazardous materials. When combined with a high-PSI overlay of cement based patching material it creates a suitable surface for the subsequent application of any type of standard-industry flooring.

The Benefits:

- **HUGE COST SAVINGS.** Typically costs 50% less than removal methods – allowing you to stretch your budget dollars significantly.
- **SURFACE REMAINS INTACT.** Requires minimal surface preparation with no disturbance of fibers.
- **TOTAL COVERAGE.** Provides flexible strength and a protective barrier that encloses the hazardous flooring for the life of the building.
- **PROVEN PERFORMANCE.** The ABS has a ten year performance history with the US Postal Service and many large school districts.
- **LIFETIME WARRANTY.** The Asbestos Barrier System is warranted to the life of the building.
- **ELIMINATES "LANDFILL LIABILITY"** The removal and disposal of toxic materials is the sole responsibility of the owner regardless of the method of disposal. From transportation to an approved waste site and proper burial, or any future disturbance of the waste, either by nature or by man, the owner is always liable. There is no such liability for a "management-in-place" solution.

Action:

Contact Rolf Denton by cell at (908) 246-8338 or by e-mail at rolf@sherland.com